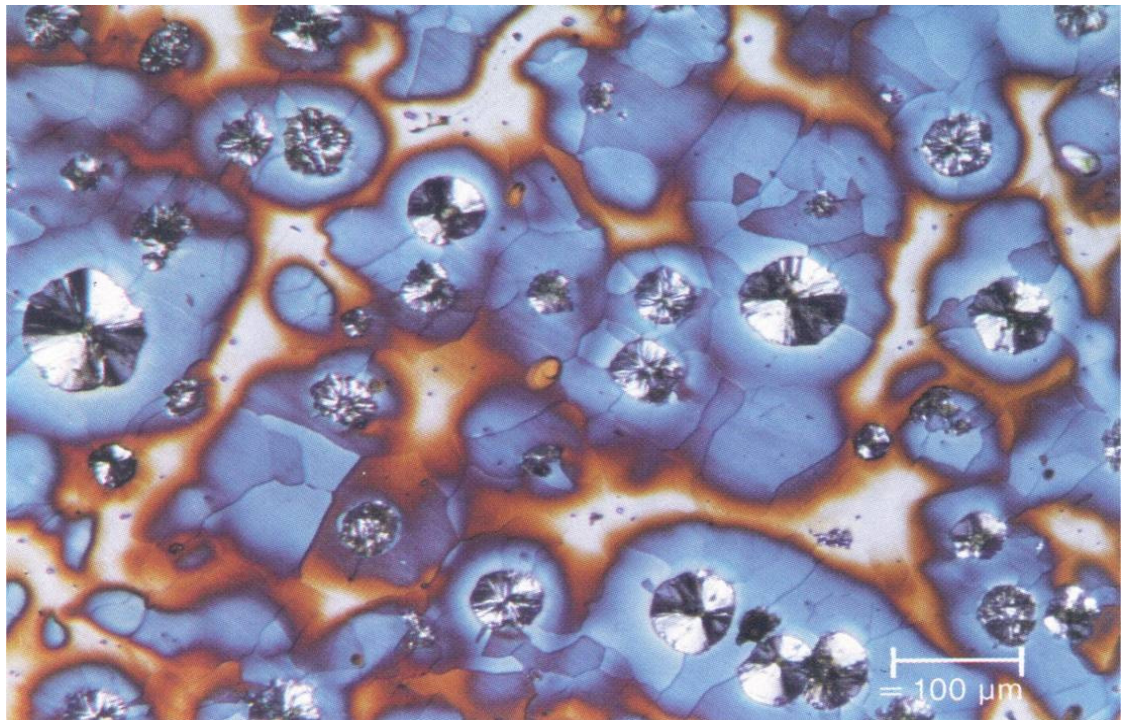


Ductile Iron - EN-GJS-400-15

Technical Specification



Tensile strength	: 400 N/mm ²
Shear strength	: 360 N/mm ²
Torsion strength	: 350 N/mm ²
Compression strength	: 700 N/mm ²
0.2% yield point	: 250 N/mm ²
Elasticity modulus E (tensile and compression)	: 169 kN/mm ²
Fracture toughness	: 30 MPa Vm
Ultimate strain	: 15 %
Density	: 7.3 g/cm ³
Poisson ratio	: 0.275 N/mm ²
Fatigue strength (Wöhler), rotating bending test un-dent sample, Ø 10.6mm	: 195 N/mm ²
Fatigue strength (Wöhler), rotating bending test dent sample, Ø 10.6mm	: 122 N/mm ²
Heat conductivity at 300 °C	: 36.2 W/(m * K)
Specific heat capacity (20 °C till 500 °C)	: 515 J/(kg*K)
Coefficient of linear thermal expansion (20 °C till 500 °C)	: 14.3 μm/(m * K)
Maximum Permeability	: 2.1 mH/m
Hysteretic loss (B = 1T)	: 0.60 kJ/m ³
Specific electric resistance	: 0.5 mW * m
Prevailing structure	: Ferrite

AHMTEC GmbH
 Hafenstrasse 6c
 D-26789 Leer / Germany
 Tel.: +49 (0)491 20980 500
 Fax: +49 (0)491 20980 509
 Email: info@ahmtec.de
 Web: www.ahmtec.de

AHMTEC
 cable protection systems